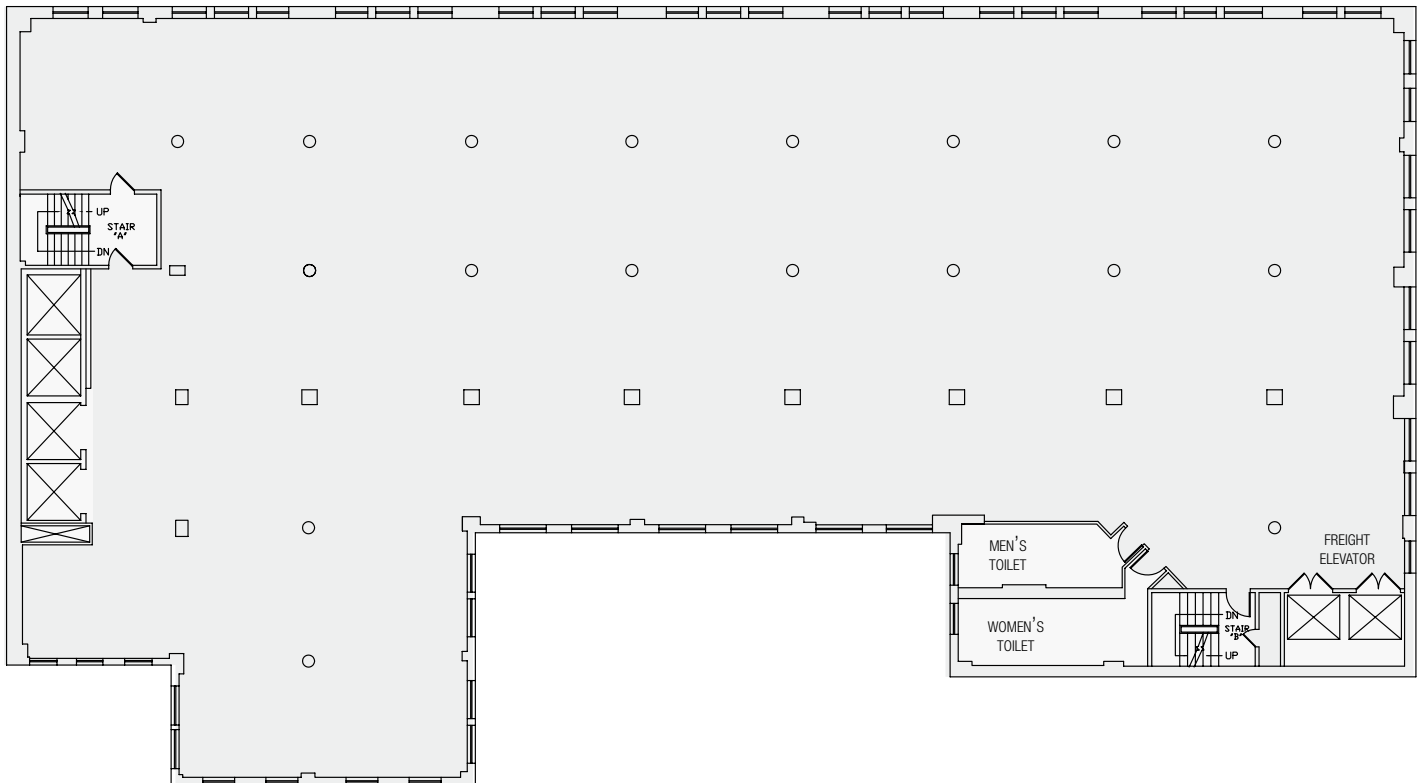
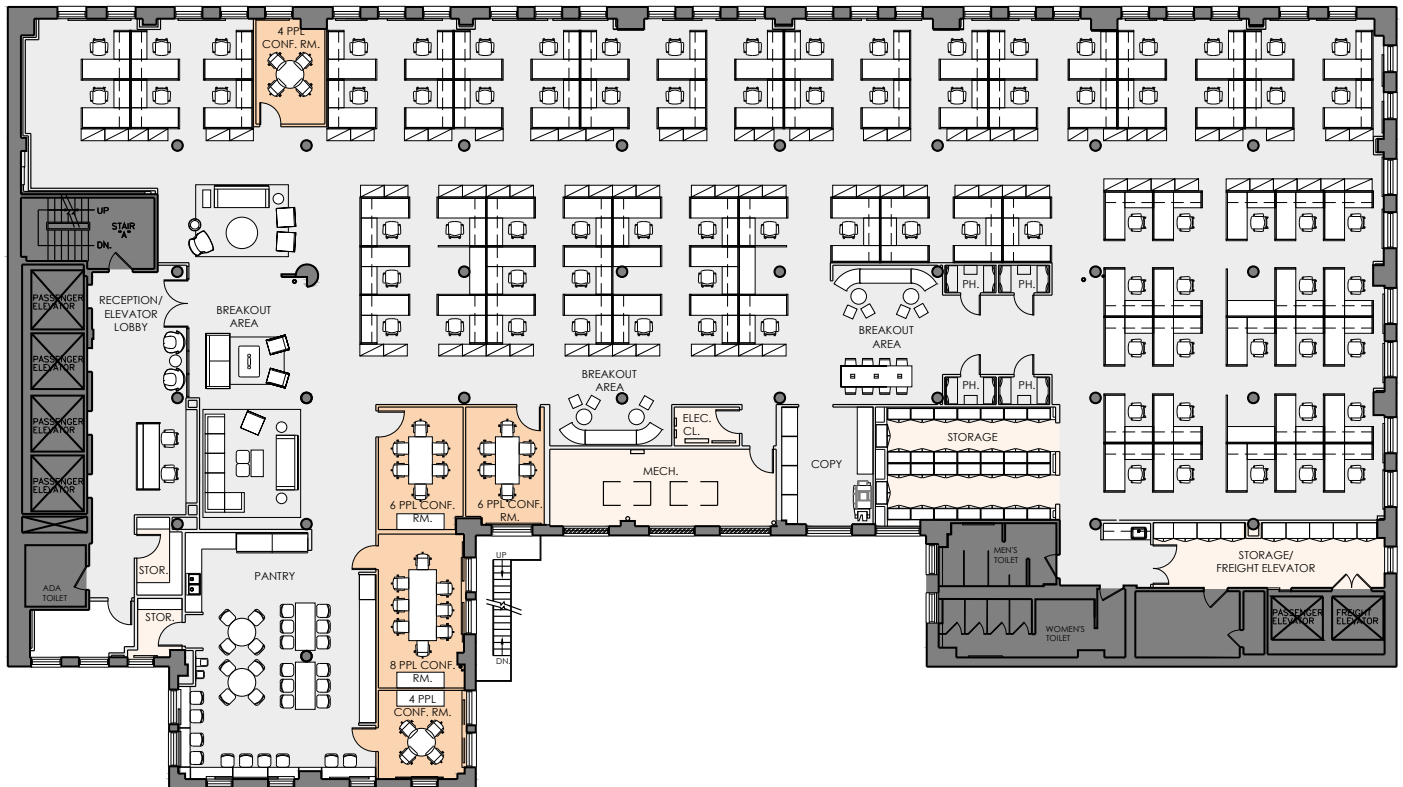


# 304 PARK AVENUE SOUTH

## CORE AND SHELL | TYPICAL FLOOR



[Click here for more information](#)



| FLOOR KEY          |    |
|--------------------|----|
| Conference Rooms   | 5  |
| Workstations 6 x 8 | 4  |
| Workstations 6 x 6 | 79 |
| Pantry             | 1  |
| Breakout Area      | 3  |
| Copy               | 2  |
| Storage            | 4  |
| Phone Room         | 4  |
| Receptionist       | 1  |
| Total Personnel    | 84 |

[Click here for more information](#)

**7TH FLOOR EXISTING CONDITIONS  
WITH PROPOSED OFFICES**



| FLOOR KEY          |    |
|--------------------|----|
| Offices            | 9  |
| Conference Rooms   | 6  |
| Workstations 6 x 8 | 4  |
| Workstations 6 x 6 | 61 |
| Pantry             | 1  |
| Breakout Area      | 3  |
| Copy               | 2  |
| Storage            | 4  |
| Phone Room         | 4  |
| Receptionist       | 1  |
| Total Personnel    | 75 |

[Click here for more information](#)