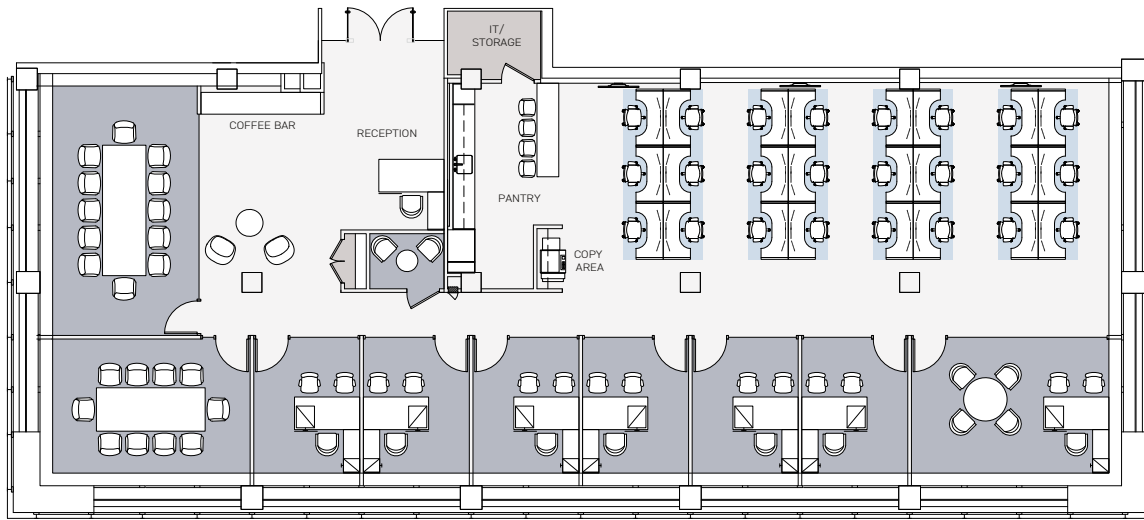


PARTIAL 43RD FLOOR (SW)

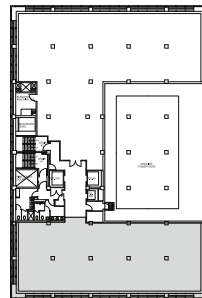
6,846 RSF | PRE-BUILD



EAST 48TH STREET

FLOOR KEY

Office	7	IT /Storage Room	1
Workstation	24	Pantry	1
Reception	1	Phone Room	1
Conference Room	2	Total Headcount	32



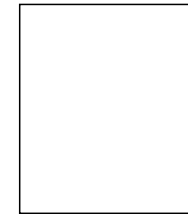
280
PARK AVENUE



EXISTING PANTRY TO REMAIN



LOWER CABINETS
Treefrog Veneer | Grey Oak Lati
Groove 62217



UPPER CABINETS
Formica |
ColorCore 7223C-90



BACKSPLASH
Dekton | Kairos



COUNTERTOP
Caesarstone | Piatra Grey
5003



UNDER COUNTER
FRIDGE
Summit | Panel ready



ESPRESSO
Miele | M6160 Milk
Perfection Coffee