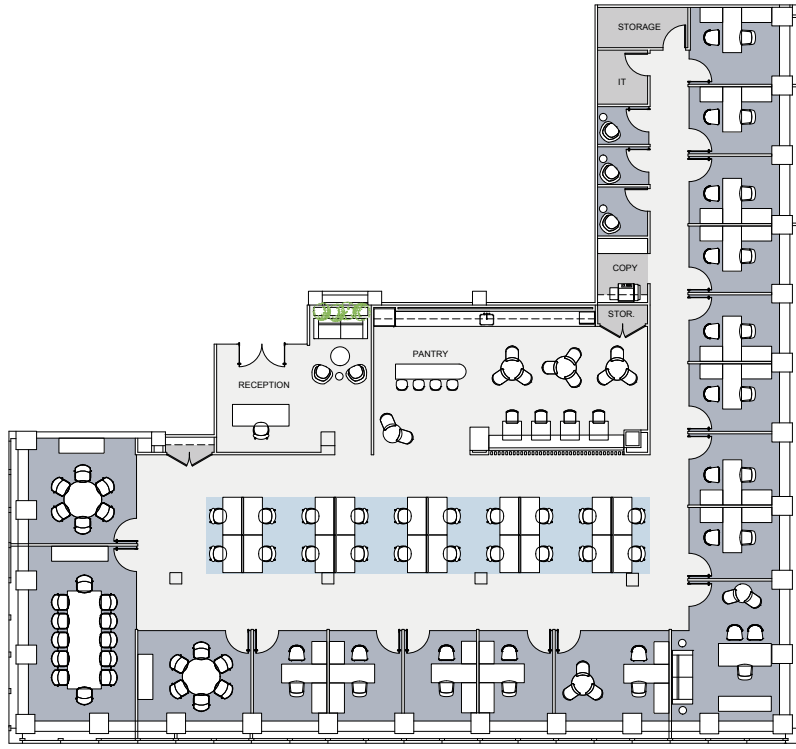


# PARTIAL 24TH FLOOR (WEST)

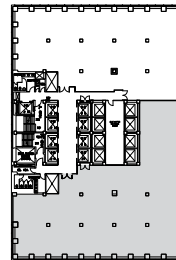
10,616 RSF | PRE-BUILD



EAST 48TH STREET

## FLOOR KEY

|                 |    |                 |    |
|-----------------|----|-----------------|----|
| Office          | 10 | IT/Storage Room | 1  |
| Workstation     | 32 | Pantry          | 1  |
| Reception       | 1  | Phone Room      | 3  |
| Conference Room | 3  | Wellness Room   | 1  |
|                 |    | Total Headcount | 43 |



CABINET WOOD  
Shinoki | Raven Oak



BAR BASE  
Chemetal | Agred Brass  
Dark



BAR PANELS  
Plyboo | Louver Wall  
Panels | Butterfly  
BY15BN Bronze Noir



BACKSPLASH & COUNTERTOP  
Fiandre | Calacatta Dorato



DISHWASHER  
Asko | D5526xlf ADA  
height panel ready