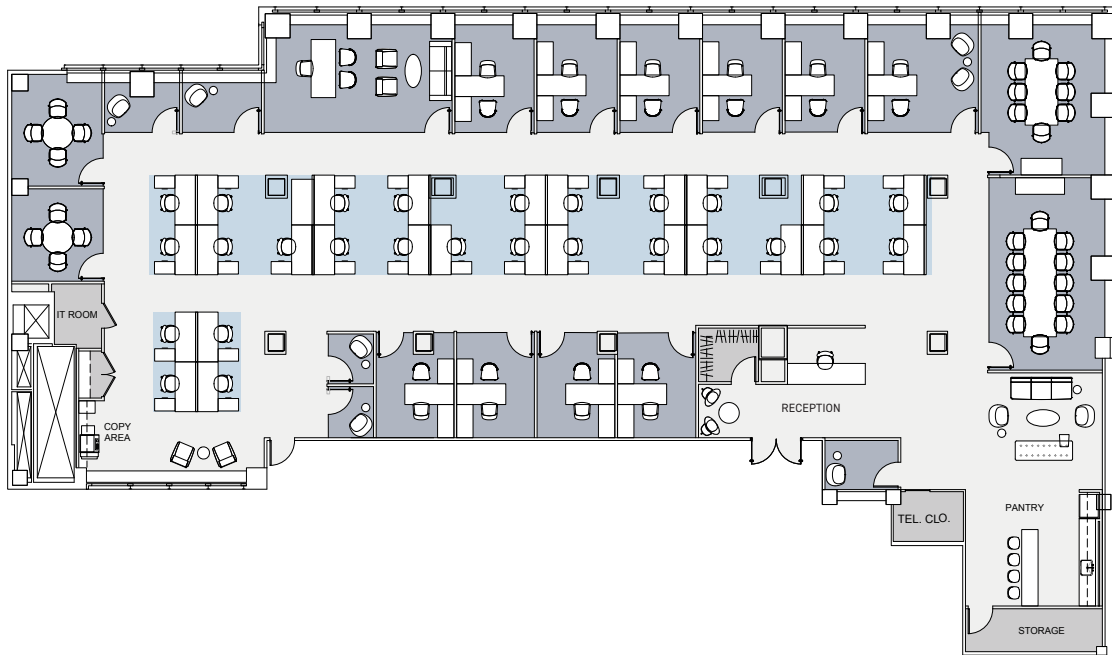


PARTIAL 14TH FLOOR (WEST)

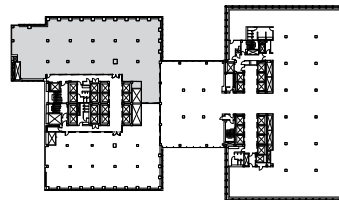
11,567 RSF | PRE-BUILD

EAST 49TH STREET

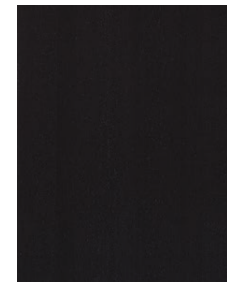


FLOOR KEY

Executive Office	3	IT Room	1
Typical Office	10	Pantry	1
Workstation	38	Copy/Storage	1
Conference Room	1	Total Headcount	51



280
PARK AVENUE



CABINET WOOD
Shinoki | Raven Oak



BAR BASE
Chemetal | Agred Brass
Dark



BAR PANELS
Plyboo | Louver Wall
Panels | Butterfly
BY15BN Bronze Noir



BACKSPLASH & COUNTERTOP
Fiandre | Calacatta Dorato



DISHWASHER
Asko | D5526xlf ADA
height panel ready