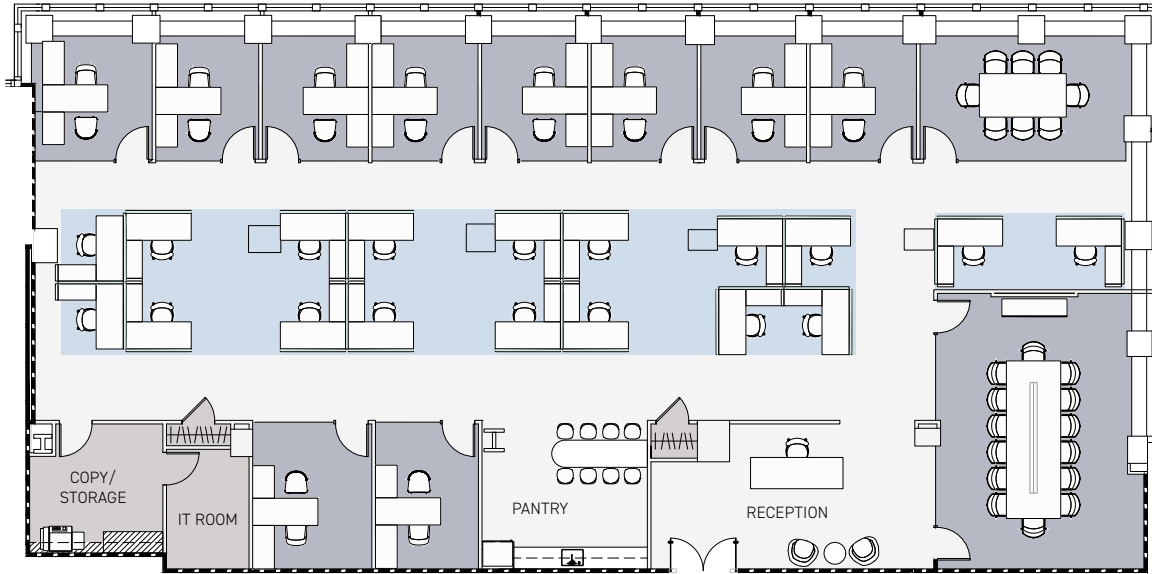


PARTIAL 5TH FLOOR (WEST)

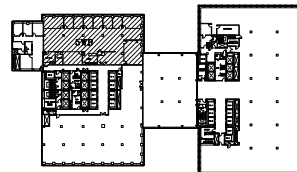
8,187 RSF | PRE-BUILD

EAST 49TH STREET



FLOOR KEY

Executive Office	10	IT Room	1
Workstation	18	Pantry	1
Reception	1	Copy/Storage	1
Conference Room	2	Total Headcount	29



280
PARK AVENUE



CABINET WOOD
Shinoki | Raven Oak



BAR BASE
Chemetal | Agred Brass
Dark



BAR PANELS
Plyboo | Louver Wall
Panels | Butterfly
BY15BN Bronze Noir



BACKSPLASH & COUNTERTOP
Fiandre | Calacatta Dorato



DISHWASHER
Asko | D5526xlf ADA
height panel ready