

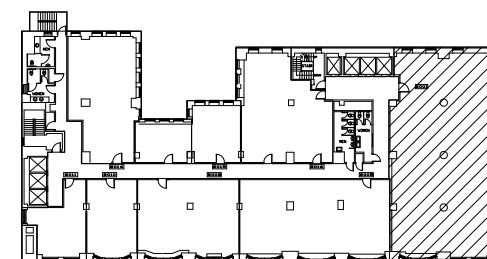
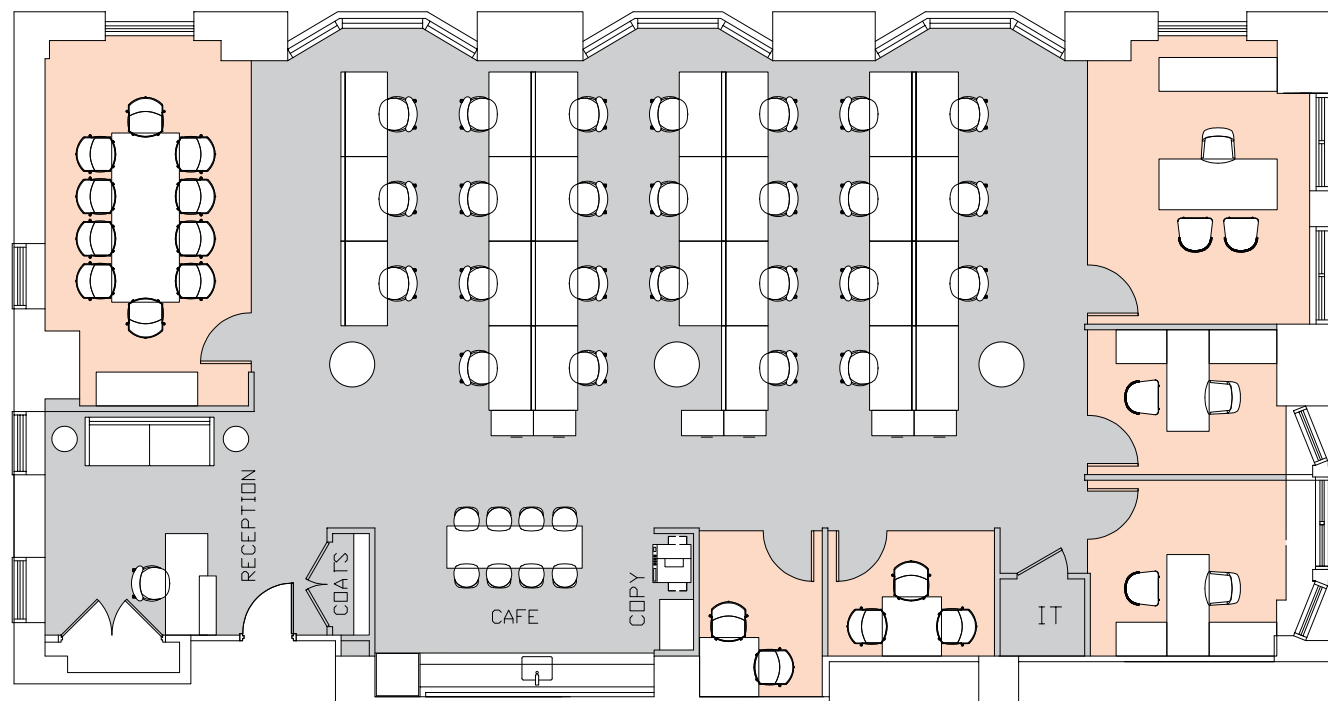
EXISTING CONDITIONS SUITE 2001 – 5,092 RSF



[Click here for more information](#)

FLOOR KEY

		Total Employees	33
Workstations	32	Reception	1
Conference Room	1	Pantry	1



PROPOSED LAYOUT SUITE 2001 – 5,092 RSF

[Click here for more information](#)

FLOOR KEY

		Total Employees	29
Offices	3	Meeting Rooms	2
Workstations	25	Reception	1
Conference Room	1	Cafe	1
Copy Area	1	IT Room	1