

450 Park Avenue

WiredScore Fact Sheet



Certification	Expiration date	Building size	Building address
WiredScore	November 2, 2026	333000 sqft	450 Park Avenue, New York, New York, 10022, United States

450 Park Avenue is a WiredScore Platinum building





Being a WiredScore Platinum building means that 450 Park Avenue can support occupiers with the most stringent technology requirements. The building has been designed as best-in-class across all features of connectivity that matter most to occupiers: number and quality of internet service providers; diversity and resiliency of telecommunications and power infrastructure; wireless network infrastructure; ease of installation and capacity to readily support new telecommunications services.



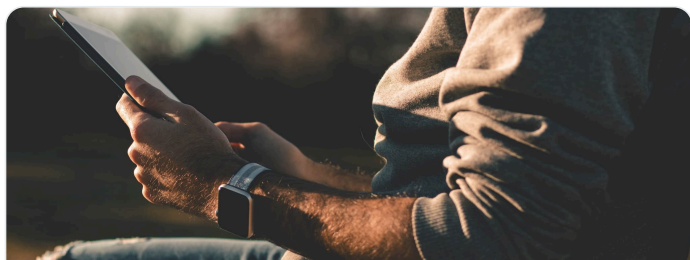
WiredScore
PLATINUM

1 of 62 WiredScore Platinum buildings in New York

An overview of the experience at 450 Park Avenue

Category	Your experience at 450 Park Avenue	Regular building experience
 Mobile and Internet	Enjoy unparalleled digital connectivity with top-tier internet providers, powered by robust fiber infrastructure for the ultimate online experience throughout the building.	Expect frustrating interruptions and dead zones as you move throughout the building due to patchy digital connectivity.
 Set-up	Enjoy seamless and effortless internet setup with multiple high-speed providers at your fingertips with streamlined legal contracting. Ensuring you easily find the perfect match for your needs and enjoy a smooth, hassle-free digital experience.	Experience a tedious and slow process to setup your internet connection.
 Future-ready	To meet your needs well into the future, the building is equipped with ample spare capacity throughout, including the risers, points of entry and telecommunications rooms. This ensures the building can accommodate new and emerging technologies, providing you with the flexibility and adaptability you require.	Risk future problems arising from an internet connection and mobile connectivity that can't keep up with your growing needs.
 Resiliency	The building's robust infrastructure, including multiple entry points and diverse and secure risers and telecommunications rooms, mitigates against almost all risks to uninterrupted connectivity.	Experience frequent productivity loss and general frustration resulting from your vulnerable, and poorly secured internet infrastructure.

Connected building highlights at 450 Park Avenue



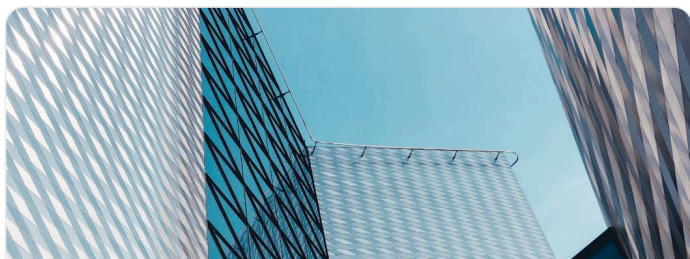
Mobile and Internet

- Excellent mobile signal from multiple operators means your calls don't drop.
- Free Wi-Fi in amenity areas allows you to be connected throughout the building.
- Strong Wi-Fi performance with minimum speeds of 10Mbps throughout the building.
- Easily install fixed wireless, satellite and mobile equipment with dedicated space and cable pathways to risers on the rooftop.



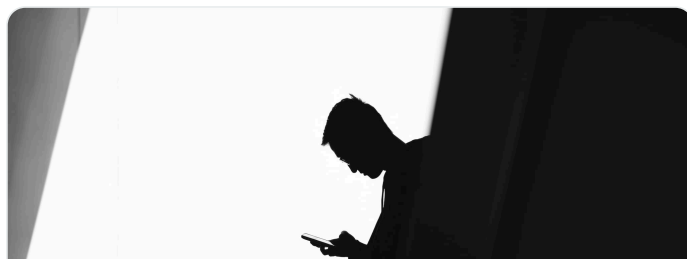
Set-up

- Diverse points of entry means your connection is robust.
- Install times are minimised with ISP connection points present across the floors of the building.
- Easier service installation enabled by spare capacity within the below-ground telecommunications cable pathway.
- Secure access to risers on each floor prevents unauthorized access and accelerates the installation of connectivity services.
- Protected routing enabled by a top-to-bottom riser expedites the installation process.



Future-ready

- New internet service providers can be installed quickly with available space in the telecommunications room.
- Signed ISP agreements are available to streamline new connections.
- Standardized ISP agreements are available to streamline new connections.



Resiliency

- Physically diverse routes for your internet connection means your connectivity is robust.
- Your connection is safeguarded by a secure and dedicated telecommunications room.
- Multiple telecommunications rooms means you can safeguard business-critical services.
- A climate controlled telecommunication room protects your equipment from overheating and condensation.
- Connectivity infrastructure in the telecommunications room is protected from flooding.

What are the Internet service providers (ISP) within the building?

Name of provider	Provider type	Intake	Location	Riser	Full distribution
Extenet Systems	Fiber - Primary	East 57th Street and Park Avenue	LA Level - POP Room	Telecom Riser	Yes
Altice	Fiber - Primary	East 57th Street and Park Avenue, Park Avenue	LA Level - POP Room	Telecom Riser	Yes
Crown Castle Fiber	Fiber - Primary	East 57th Street and Park Avenue	LA Level - POP Room	Telecom Riser	Yes
Pilot Fiber	Fiber - Primary	East 57th Street and Park Avenue	LA Level - POP Room	Telecom Riser	No
Verizon	Fiber - Primary	East 57th Street and Park Avenue	LA Level - POP Room, LA Level - Telecom Room	Telecom Riser	No
Verizon	Copper/Coaxial	East 57th Street and Park Avenue	LA Level - Telecom Room	Telecom Riser	Yes
Lumen Technologies	Fiber - Primary	East 57th Street and Park Avenue	LA Level - POP Room	Telecom Riser	No
Spectrum Business	Fiber - Primary	East 57th Street and Park Avenue	Telecom Riser Closets	Telecom Riser	No
BAI Communications	Fiber - Primary	East 57th Street and Park Avenue	LA Level - POP Room	Telecom Riser	No
Spectrum Business	Copper/Coaxial	East 57th Street and Park Avenue	Telecom Riser Closets	Telecom Riser	Yes
Pilot Fiber	Low-cost	East 57th Street and Park Avenue	LA Level - POP Room	Telecom Riser	No
Cogent	Fiber - Secondary	East 57th Street and Park Avenue	LA Level - POP Room	Telecom Riser	No

What are the Mobile operators within the building?

Name of provider	Performance	Source	Additional areas covered	5G ready
AT&T Mobility	Good	RF survey	No	Yes
T-Mobile US	Good	RF survey	No	Yes
Verizon Wireless	Good	RF survey	No	Yes

What is WiredScore?

WiredScore certification is the global standard for digital connectivity, recognizing and promoting best-in-class digitally connected buildings across the globe. Being certified by WiredScore demonstrates the building has gone through rigorous 3rd party verification.

4000+

certified buildings

8m+

people in WiredScore
certified buildings

800m+

certified square feet

160+

cities across the globe