

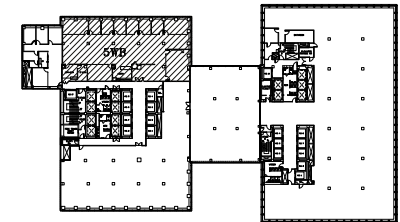
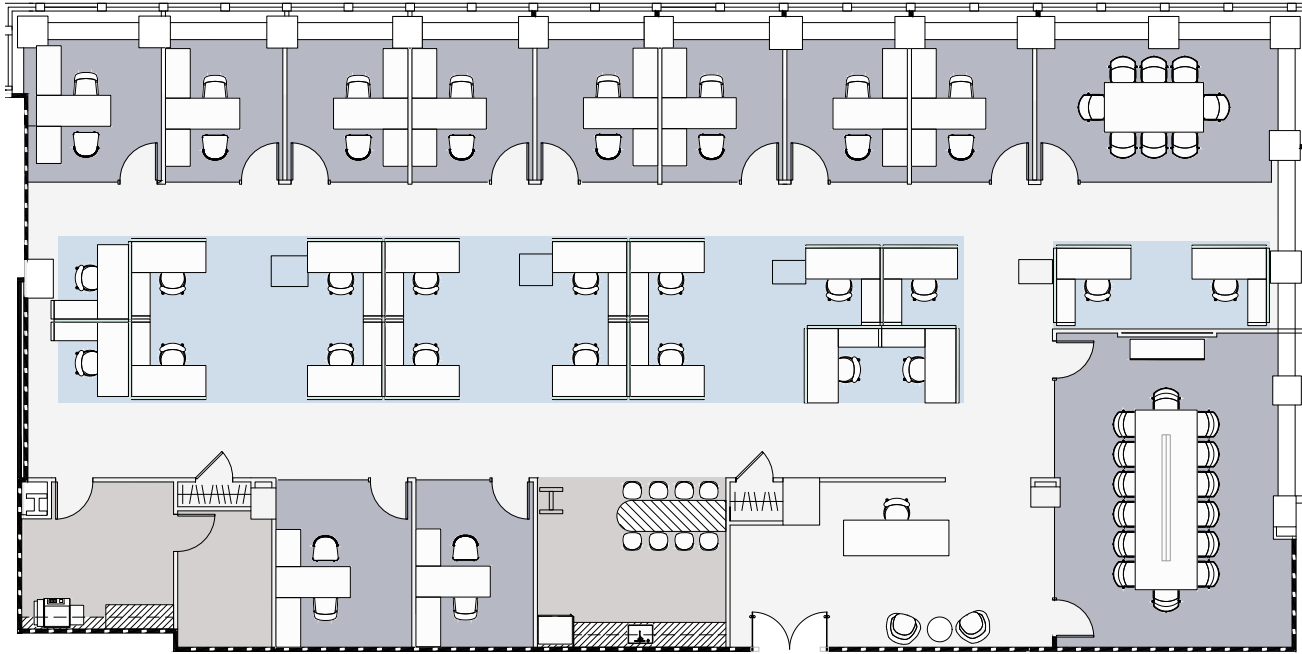
280

PARK AVENUE

EXISTING CONDITIONS PARTIAL 5TH FLOOR (WEST)
8,187 RSF | AVAILABLE

FLOOR KEY

Executive Offices	11	IT Room	1
Workstations	18	Pantry	1
Reception	1	Copy/Storage	1
Conference Rooms	1	Total Headcount	30



280

PARK AVENUE

PROPOSED MODIFIED PREBUILD PARTIAL 5TH FLOOR (WEST)
 8,187 RSF | AVAILABLE

FLOOR KEY

Executive Offices	10	IT Room	1
Workstations	18	Pantry	1
Reception	1	Copy/Storage	1
Conference Rooms	2	Total Headcount	29

[Click here for more information](#)



APPLIANCE PULL
Signature Hardware |
Hatton Solid Brass A
ppliance Pull 18" Matte
Black



FRIDGE
Fisher Paykel | 36" French
door panel ready



CABINET WOOD
Shinoki | Raven Oak



BAR BASE
Chemetal | Agred Brass
Dark



BAR PANELS
Plyboo | Louver Wall
Panels | Butterfly
BY15BN Bronze Noir



BACKSPLASH & COUNTERTOP
Fiandre | Calacatta Dorato



DISHWASHER
Asko | D5526xlf ADA
height panel ready



FAUCET
Kohler | Purist
K-7505-BL Black



SINK
Elkay | Elkay Quartz Classic
25" x 22" x 5-1/2"
ELGAD2522PDWH0



COFFEE MAKER
Fisher Pike | 24 Inch
Built-In Coffee Maker
EB24DSXB1



MICROWAVE
Sharp | 24 Inch Microwave
Drawer with Easy Touch,
Black stainless SMD2470AH

280

PARK AVENUE

PROPOSED MODIFIED PREBUILD PARTIAL 5TH FLOOR (WEST) NEW PANTRY MILLWORK & APPLIANCES