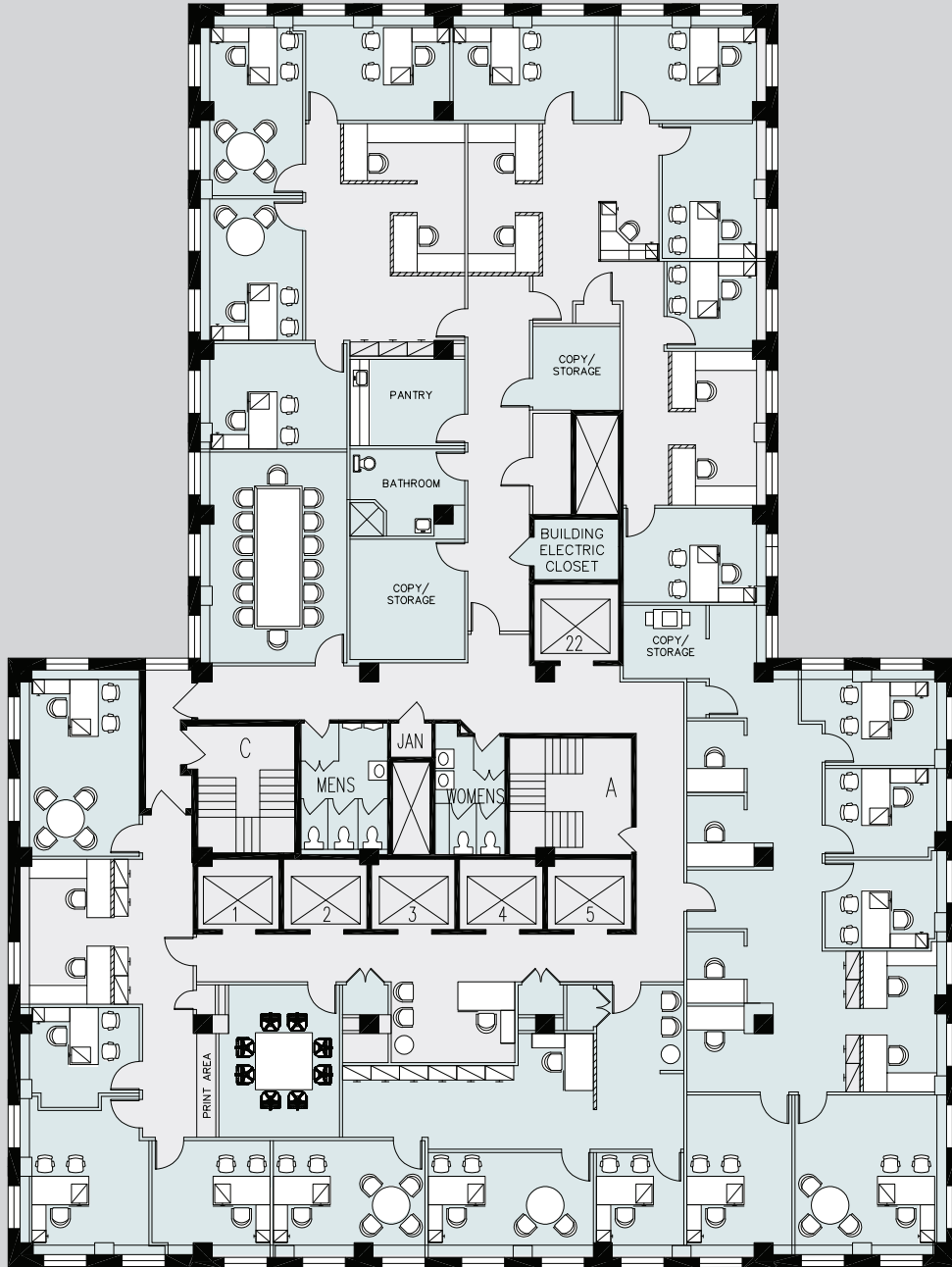




PROPOSED LAYOUT ENTIRE 29TH FLOOR 13,222 RSF

FLOOR KEY:

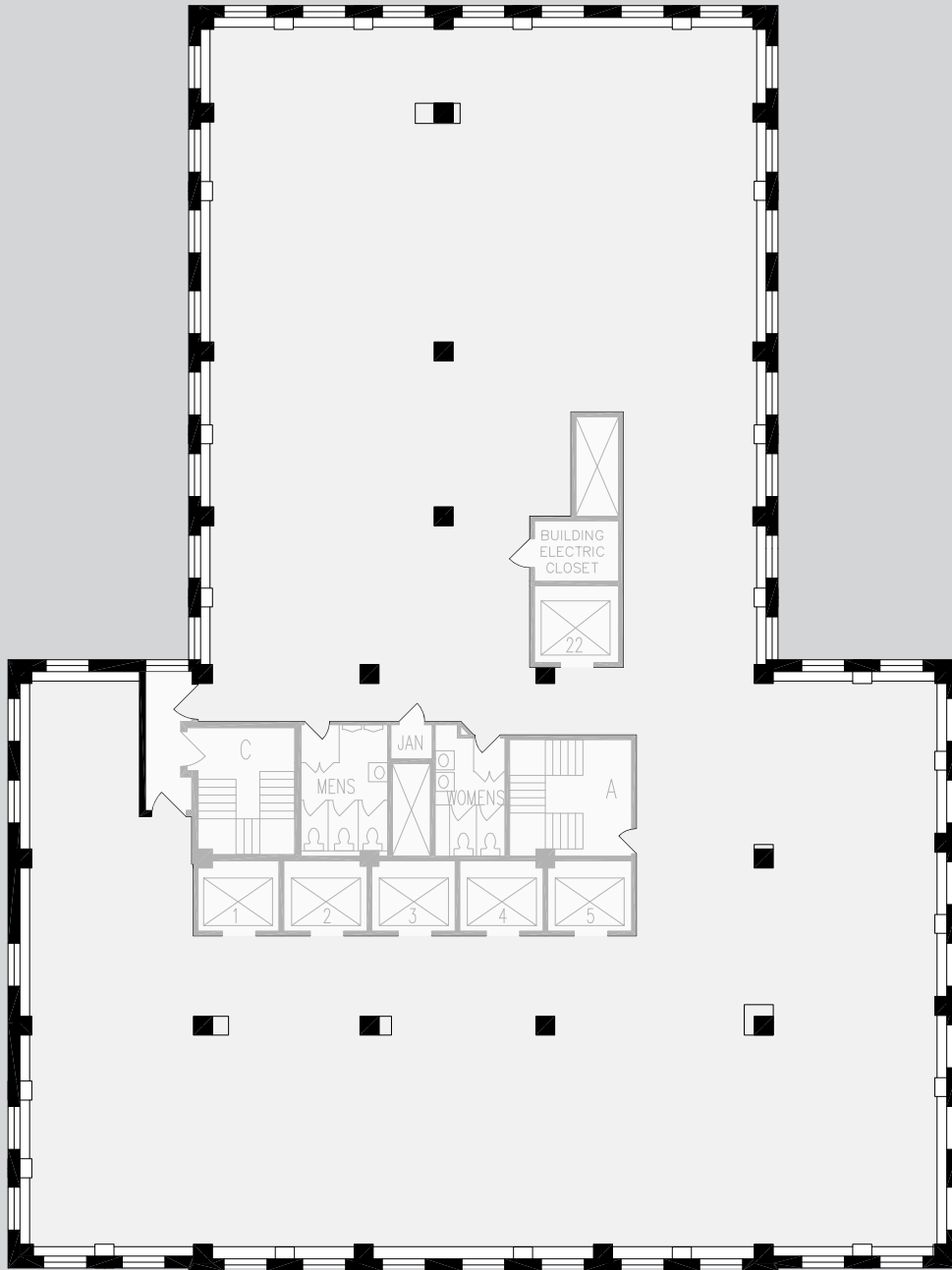
Offices	21
Workstations	33
Conference Rooms	4
Pantry	1
Reception	1
Phone Rooms	4
Total Headcount	55



EXISTING CONDITIONS ENTIRE 29TH FLOOR 13,222 RSF

FLOOR KEY:

Offices	21
Workstations	4
Conference Rooms	2
Pantry	1
IT/Storage	1
Total Headcount	26



CORE AND SHELL
ENTIRE 29TH FLOOR
13,222 RSF