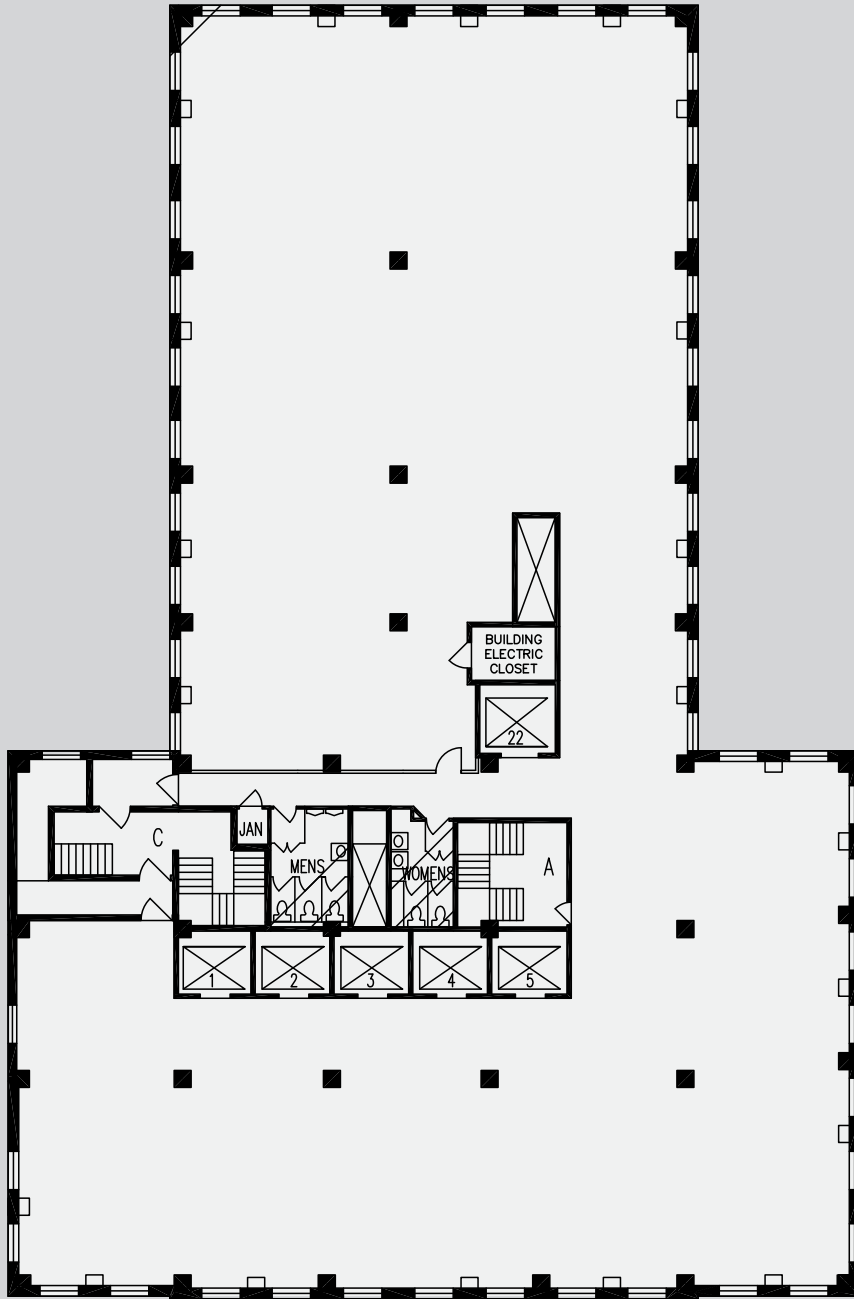


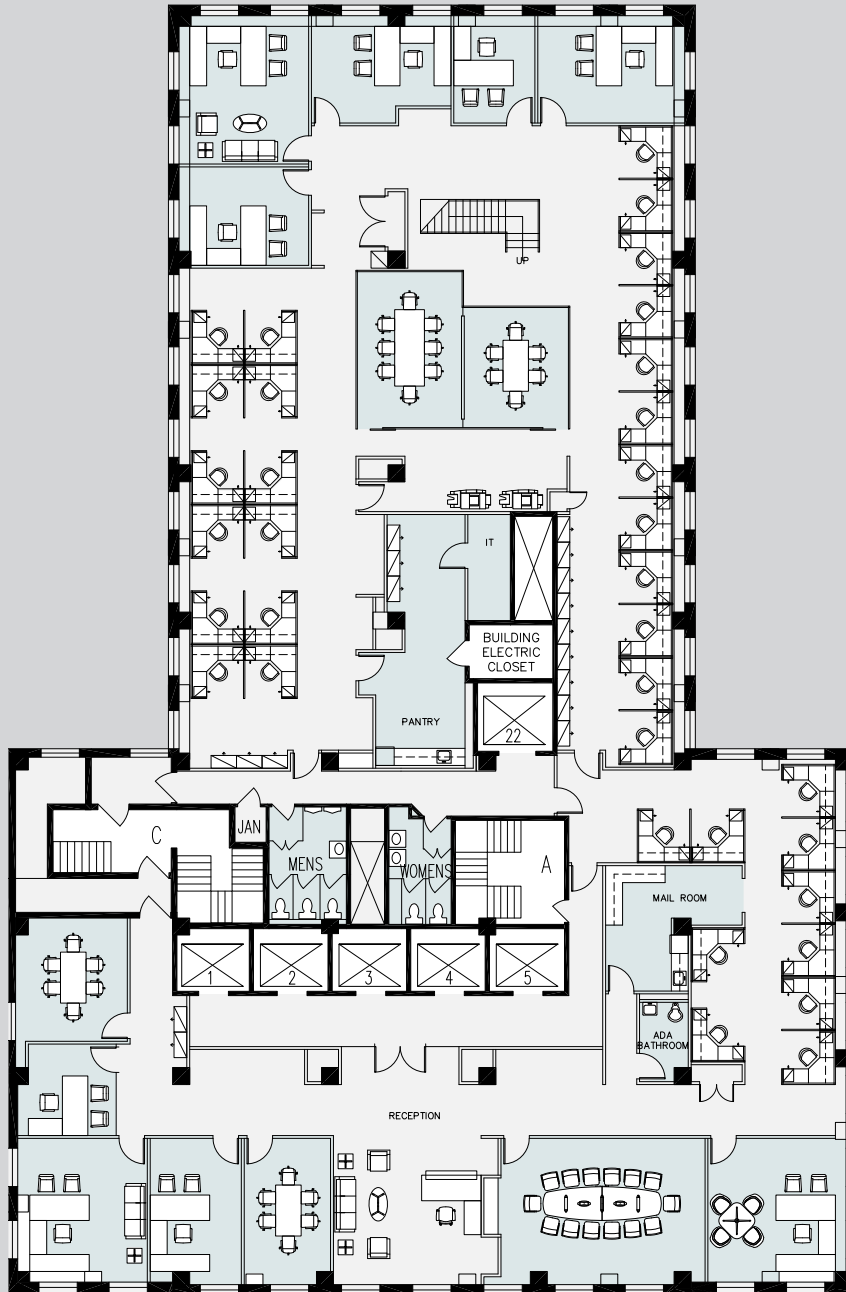
## PROPOSED LAYOUT ENTIRE 27TH FLOOR 14,393 RSF

### FLOOR KEY:

Offices	11
Workstations	44
Conference Rooms	4
Phone Rooms	4
Reception	1
Pantry	1
<b>Total Headcount</b>	<b>56</b>



CORE AND SHELL  
ENTIRE 27TH FLOOR  
14,393 RSF



## EXISTING CONDITIONS ENTIRE 27TH FLOOR 14,393 RSF

### FLOOR KEY:

Offices	9
Workstations	22
Conference Rooms	5
Reception	1
Pantry	1
<b>Total Headcount</b>	<b>32</b>