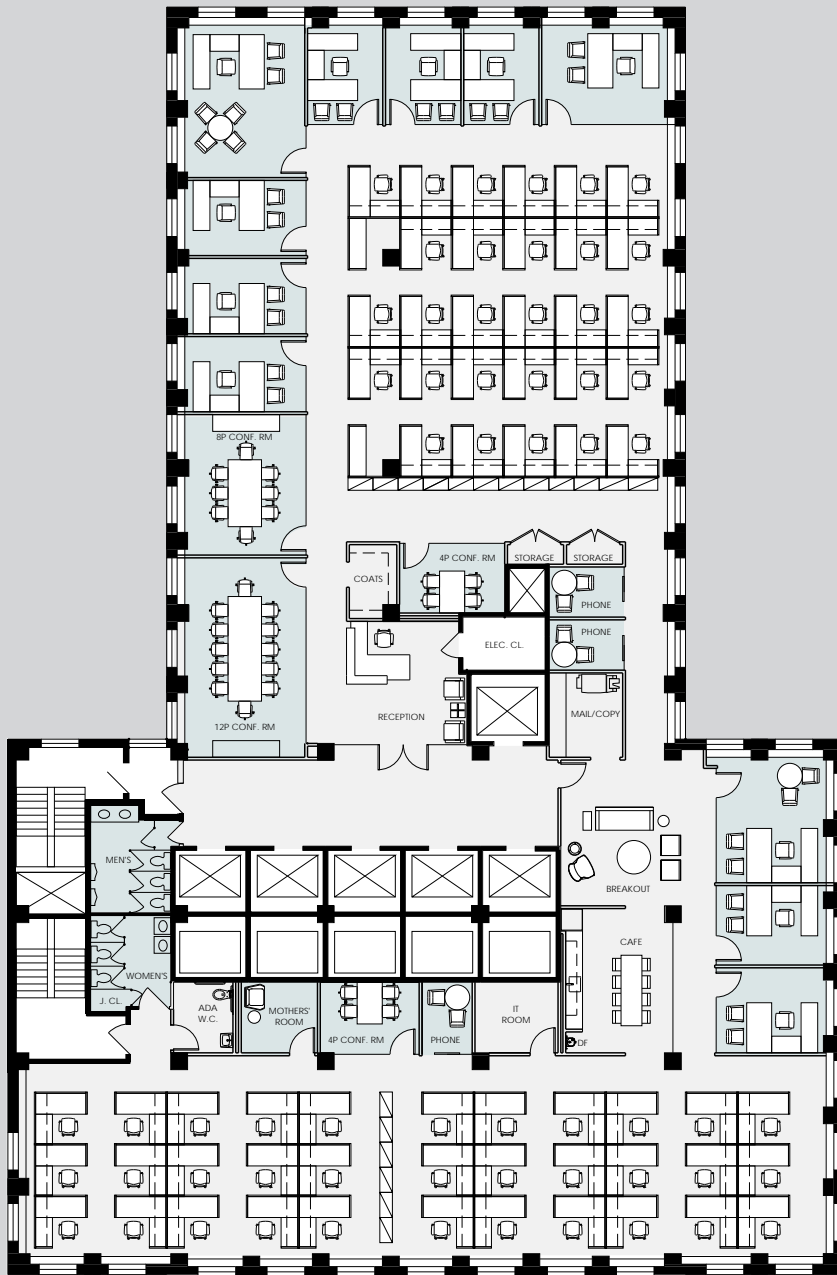


# PROPOSED LAYOUT OFFICE PLAN ENTIRE 21ST FLOOR 14,318 RSF

## FLOOR KEY:

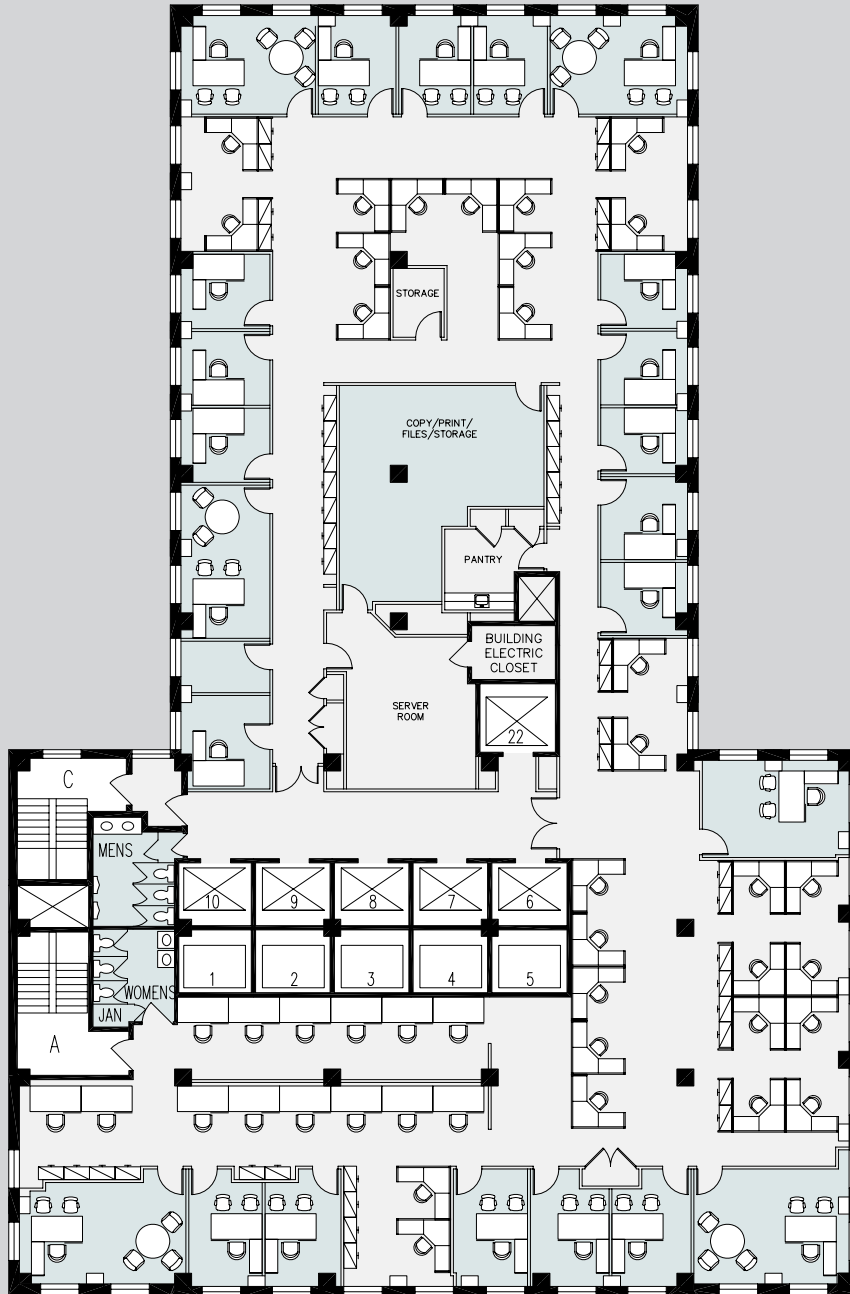
|                        |           |
|------------------------|-----------|
| Offices                | 24        |
| Workstations           | 23        |
| Conference Rooms       | 3         |
| Phone Room             | 1         |
| Reception              | 1         |
| Pantry                 | 1         |
| <b>Total Headcount</b> | <b>48</b> |



# PROPOSED LAYOUT OPEN PLAN ENTIRE 21ST FLOOR 14,318 RSF

FLOOR KEY:

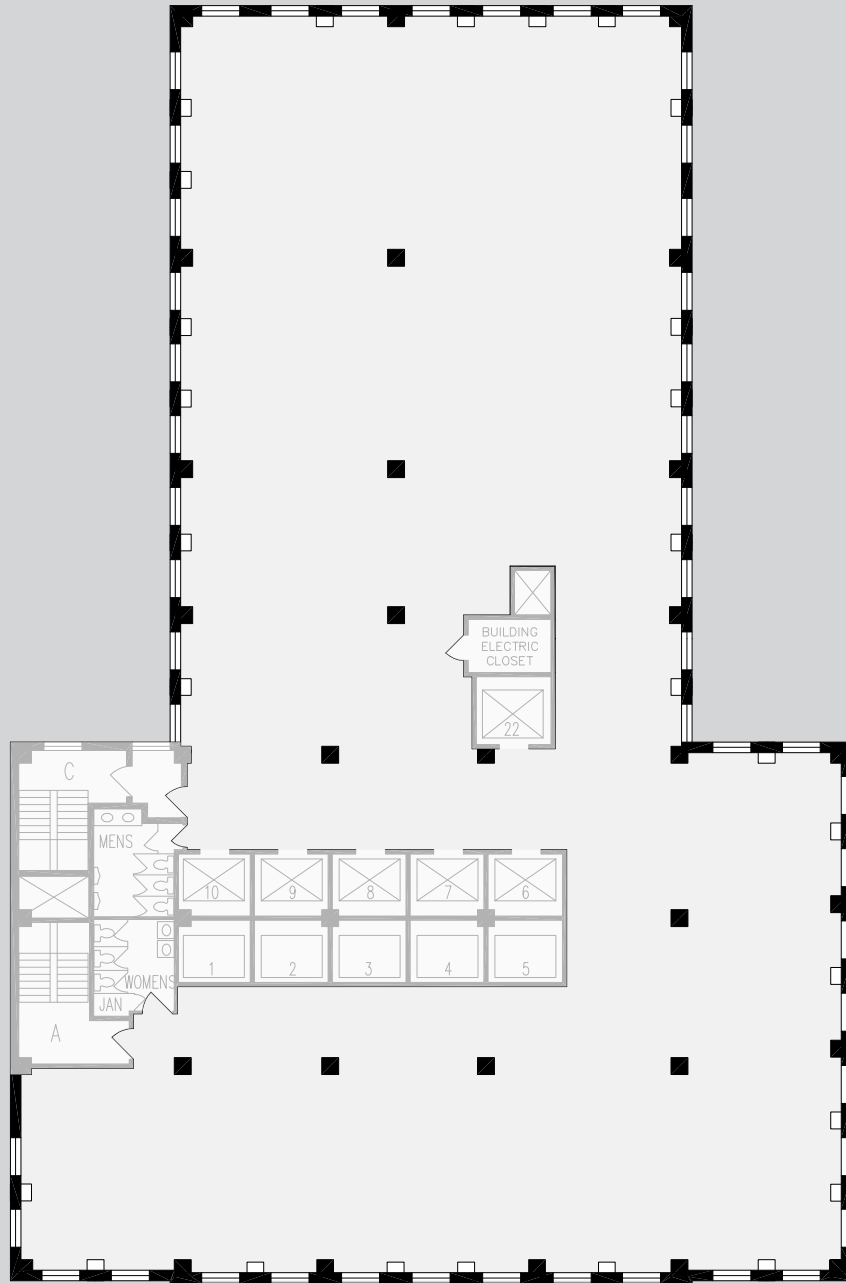
|                        |           |
|------------------------|-----------|
| Offices                | 11        |
| Workstations           | 61        |
| Conference Rooms       | 4         |
| Phone Rooms            | 3         |
| Reception              | 1         |
| Pantry                 | 1         |
| <b>Total Headcount</b> | <b>73</b> |



## EXISTING CONDITIONS ENTIRE 21ST FLOOR 14,318 RSF

### FLOOR KEY:

|                        |           |
|------------------------|-----------|
| Offices                | 34        |
| Workstations           | 12        |
| Conference Room        | 1         |
| Reception              | 1         |
| Pantry                 | 1         |
| <b>Total Headcount</b> | <b>47</b> |



**CORE AND SHELL**  
ENTIRE 21ST FLOOR  
14,318 RSF