

# 304 Park Avenue South

## WiredScore Fact Sheet



Certification  
**WiredScore**

Expiration date  
**February 9, 2026**

Building size  
**210000 sqft**

Building address  
**304 Park Avenue South, New York, New York, 10010, United States**

### 304 Park Avenue South is a WiredScore Gold building





Being a WiredScore Gold building means that 304 Park Avenue South can support occupiers with significant technology requirements. The building has been designed to provide occupiers with access to multiple high-quality internet service providers and a variety of cabling types including fiber. Ample wireless connectivity and backup power resources have also been put in place. The infrastructure in place ensure connectivity sources will be protected, diverse, and prepared for the connectivity needs of future occupiers.



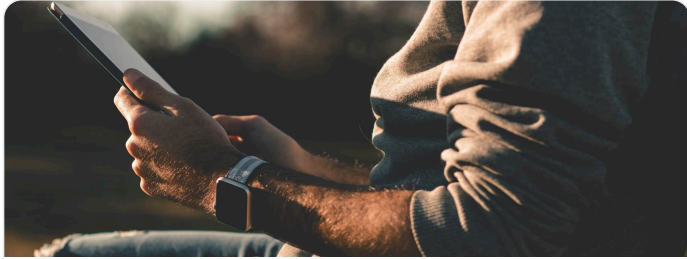
**WiredScore**  
**GOLD**

1 of 42 WiredScore Gold buildings in New York

An overview of the experience at 304 Park Avenue South

| Category   | Your experience at 304 Park Avenue South  | Regular building experience   |
|--|---|---|
|  Mobile and Internet | Enjoy excellent connectivity throughout the building, powered by high-quality fiber infrastructure and internet service providers.  | Expect frustrating interruptions and dead zones as you move throughout the building due to patchy digital connectivity.                   |
|  Set-up              | Enjoy seamless and effortless internet setup with multiple high-speed providers at your fingertips with streamlined legal contracting. Ensuring you easily find the perfect match for your needs and enjoy a smooth, hassle-free digital experience.                                      | Experience a tedious and slow process to setup your internet connection.  |
|  Future-ready        | To meet your needs far into the future, the building is equipped with spare capacity in the risers, point of entry and telecommunications room. This ensures the building can accommodate new and emerging technologies, providing you with the flexibility and adaptability you require. | Risk future problems arising from an internet connection and mobile connectivity that can't keep up with your growing needs.              |
|  Resiliency        | Your building's robust infrastructure, including multiple entry points, diverse and secure risers and telecommunications rooms, mitigates most risks to uninterrupted connectivity.   | Experience frequent productivity loss and general frustration resulting from your vulnerable, and poorly secured internet infrastructure. |

## Connected building highlights at 304 Park Avenue South



### Mobile and Internet

- Multiple high-speed providers
- Easily install fixed wireless, satellite and mobile equipment with dedicated space and cable pathways to risers on the rooftop.



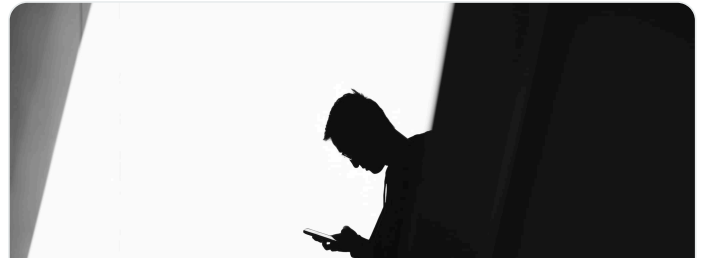
### Set-up

- Easier service installation enabled by spare capacity within the below-ground telecommunications cable pathway.
- Capacity in risers enables fast installations of new connectivity services.
- Fully-distributed fiber
- Secure access to risers on each floor prevents unauthorized access and accelerates the installation of connectivity services.
- Each floor has defined horizontal pathways to minimize disruption when you enable new services.



### Future-ready

- New internet service providers can be installed quickly with available space in the telecommunications room.
- Standardized ISP agreements are available to streamline new connections.
- Connect seamlessly to service providers via below-ground telecommunications cable pathways into the building.



### Resiliency

- Your connection is safeguarded by secure space for telecommunications equipment.
- Physically diverse routes for your internet connection on different sides of the building means your connectivity is robust.
- Enjoy reliable connectivity thanks to diverse riser routing throughout the building.
- Multiple telecommunications rooms means you can safeguard business-critical services.
- Reduce the risk of damage to cabling with diverse cable routes from the telecommunications rooms.

What are the Internet service providers (ISP) within the building?

| Name of provider  | Provider type   | Intake  | Location  | Riser         | Full distribution |
|-------------------|-----------------|---|---|---------------|-------------------|
| Pilot Fiber       | Fiber - Primary | POE #1 - East 23rd Street (Northwest)                                     | Switchgear Room - Basement Level  | B Shaft Riser | No                |
| Verizon           | Fiber - Primary | POE #1 - East 23rd Street (Northwest)                                     | Verizon Cage - Basement Level, IMG Endeavor's Server Room - 5th Floor                                   | B Shaft Riser | Yes               |
| Spectrum Business | Fiber - Primary | Aerial Point of Entry fed from 300 Park Avenue South                      | IMG Endeavor's Server Room - 5th Floor  | B Shaft Riser | Yes               |
| Verizon           | Copper/Coaxial  | POE #1 - East 23rd Street (Northwest) , POE #2 - Park Avenue South (East) | Verizon Cage - Basement Level, IMG Endeavor's Server Room - 5th Floor, Switchgear Room - Basement Level | B Shaft Riser | Yes               |
| Spectrum Business | Copper/Coaxial  | Aerial Point of Entry fed from 300 Park Avenue South                      | IMG Endeavor's Server Room - 5th Floor  | B Shaft Riser | Yes               |
| CenturyLink       | Fiber - Primary | POE #1 - East 23rd Street (Northwest)                                     | IMG Endeavor's Server Room - 5th Floor  | B Shaft Riser | No                |

What is WiredScore?

WiredScore certification is the global standard for digital connectivity, recognizing and promoting best-in-class digitally connected buildings across the globe. Being certified by WiredScore demonstrates the building has gone through rigorous 3rd party verification.

4000+

certified buildings

8m+

people in WiredScore certified buildings

800m+

certified square feet

160+

cities across the globe