

# 1515 Broadway

## WiredScore Fact Sheet



Certification

**WiredScore**

Expiration date

**February 8, 2026**

Building size

**2056000 sqft**

Building address

**1515 Broadway, New York, New York,  
10036, United States**

### 1515 Broadway is a WiredScore Platinum building





Being a WiredScore Platinum building means that 1515 Broadway can support occupiers with the most stringent technology requirements. The building has been designed as best-in-class across all features of connectivity that matter most to occupiers: number and quality of internet service providers; diversity and resiliency of telecommunications and power infrastructure; wireless network infrastructure; ease of installation and capacity to readily support new telecommunications services.



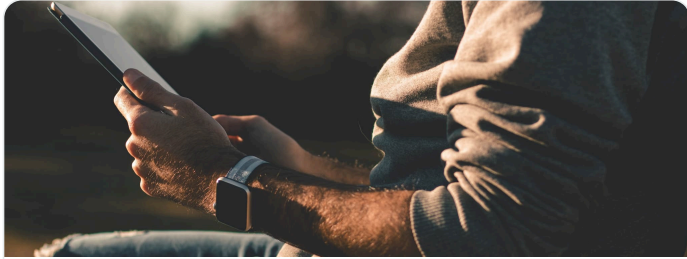
**WiredScore**  
**PLATINUM**

1 of 62 WiredScore Platinum buildings in New York

An overview of the experience at 1515 Broadway

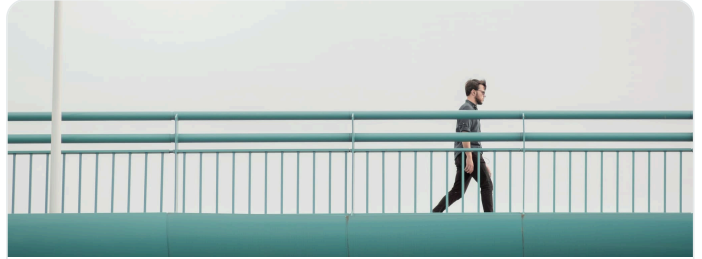
Category	Your experience at 1515 Broadway	Regular building experience
 Mobile and Internet	Enjoy unparalleled digital connectivity with top-tier internet providers and superior mobile performance, powered by robust fiber infrastructure for the ultimate online experience throughout the building.	Expect frustrating interruptions and dead zones as you move throughout the building due to patchy digital connectivity.
 Set-up	Enjoy seamless and effortless internet setup with multiple high-speed providers at your fingertips with streamlined legal contracting. Ensuring you easily find the perfect match for your needs and enjoy a smooth, hassle-free digital experience.	Experience a tedious and slow process to setup your internet connection.
 Future-ready	To meet your needs well into the future, the building is equipped with ample spare capacity throughout, including the risers, points of entry and telecommunications rooms. This ensures the building can accommodate new and emerging technologies, providing you with the flexibility and adaptability you require.	Risk future problems arising from an internet connection and mobile connectivity that can't keep up with your growing needs.
 Resiliency	The building's robust infrastructure, including multiple entry points and diverse and secure risers and telecommunications rooms, mitigates against almost all risks to uninterrupted connectivity.	Experience frequent productivity loss and general frustration resulting from your vulnerable, and poorly secured internet infrastructure.

## Connected building highlights at 1515 Broadway



### Mobile and Internet

- Multiple high-speed providers
- Strong mobile signal means your calls don't drop.
- Easily install fixed wireless, satellite and mobile equipment with dedicated space and cable pathways to risers on the rooftop.



### Set-up

- Easier service installation enabled by spare capacity within the below-ground telecommunications cable pathway.
- Capacity in risers enables fast installations of new connectivity services.
- Fully-distributed fiber
- Secure access to risers on each floor prevents unauthorized access and accelerates the installation of connectivity services.
- Each floor has defined horizontal pathways to minimize disruption when you enable new services.



### Future-ready

- Signed ISP agreements are available to streamline new connections.
- New internet service providers can be installed quickly with available space in the telecommunications room.
- Standardized ISP agreements are available to streamline new connections.
- Connect seamlessly to service providers via below-ground telecommunications cable pathways into the building.



### Resiliency

- Your connection is safeguarded by a secure and dedicated telecommunications room.
- Physically diverse routes for your internet connection on different sides of the building means your connectivity is robust.
- Enjoy reliable connectivity thanks to diverse riser routing throughout the building.
- An audit of the telecommunications installation verifies best practices are followed.

## What are the Internet service providers (ISP) within the building?

Name of provider	Provider type	Intake	Location	Riser	Full distribution
Verizon	Fiber - Primary	West 44th Street	Telephone Frame Room - C1 Level	Riser 1 - Telephone Closet Riser	Yes
Verizon	Copper/Coaxial	West 44th Street	Telephone Frame Room - C1 Level	Riser 1 - Telephone Closet Riser	Yes
Crown Castle Fiber	Fiber - Primary	West 45th Street (North POE), West 44th Street	Telephone Frame Room - C1 Level	Riser 1 - Telephone Closet Riser	No
Zayo	Fiber - Primary	West 44th Street	Telephone Frame Room - C1 Level	Riser 1 - Telephone Closet Riser	No
RCN	Fiber - Primary	West 44th Street, West 45th Street (North POE)	Telephone Frame Room - C1 Level	Riser 1 - Telephone Closet Riser	No
AT&T	Fiber - Primary	West 45th Street (North POE), West 44th Street	Tenant Space	Riser 1 - Telephone Closet Riser	No
Altice	Fiber - Primary	West 45th Street (North POE)	Tenant Space	Riser 1 - Telephone Closet Riser	No
Spectrum Business	Fiber - Primary	West 45th Street (Northeast POE)	North Mechanical Room - C1 Level	Riser 1 - Telephone Closet Riser	Yes
Spectrum Business	Copper/Coaxial	West 45th Street (Northeast POE)	North Mechanical Room - C1 Level	Riser 1 - Telephone Closet Riser	Yes
GTT Communications	Fiber - Secondary	via Verizon	Telephone Frame Room - C1 Level	Riser 1 - Telephone Closet Riser	No
CenturyLink	Fiber - Secondary	via Verizon	Telephone Closet Riser - 14th Floor	Riser 1 - Telephone Closet Riser	No
Pilot Fiber	Fiber - Primary	West 44th Street	Telephone Frame Room - C1 Level	Riser 1 - Telephone Closet Riser	No
Towerstream	Fixed Wireless	Rooftop	Northeast Pylon Room	Direct to Tenant	No

## What is WiredScore?

---

WiredScore certification is the global standard for digital connectivity, recognizing and promoting best-in-class digitally connected buildings across the globe. Being certified by WiredScore demonstrates the building has gone through rigorous 3rd party verification.

**4000+**

certified buildings

**8m+**

people in WiredScore  
certified buildings

**800m+**

certified square feet

**160+**

cities across the globe