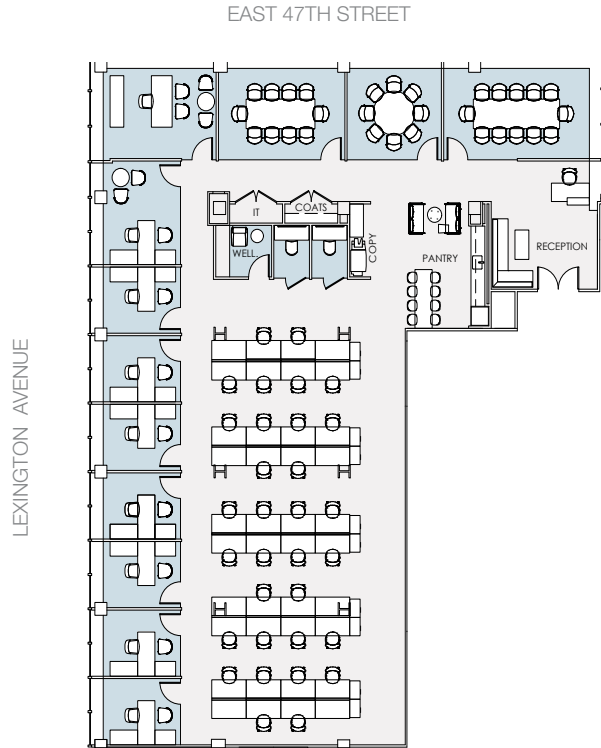


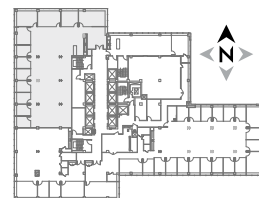
# SUITE 1900

PRE-BUILT | 8,808 RSF



## FLOOR KEY

Office	9	Pantry	1
Workstation	32	Phone Room	2
Reception	1	IT / Storage Room	1
Conference Room	2	Total Headcount	42
		RSF Per Person	209

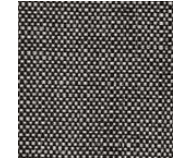


## PRE-BUILT FINISHES

### WALL FINISHES



**PAINT | BENJAMIN MOORE**  
CHANTILLY LACE OC-65  
TYPICAL THROUGHOUT



**FABRIC PANEL | CARNEGIE**  
XIREL METEOR 6427S-2023  
AT RECEPTION ACCENT WALL



**RUBBER BASE | ALLSTATE**  
NO TOE WALL BASE, 2.5" H IN WHITE  
TYPICAL THROUGHOUT

### FLOOR FINISHES



**CARPET | INTERFACE**  
WORLD WOVEN IN CHARCOAL LOOM,  
18"X36", ASHLAR INSTALLATION  
TYPICAL THROUGHOUT

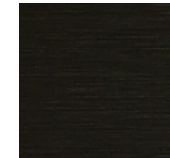


**WOOD FLOOR | PROVENZA FLOORING**  
NEW YORK LOFT IN UNION SQUARE,  
7.5" W, RANDOM LENGTHS  
AT RECEPTION/CORRIDORS/PANTRY



**WOOD SLATS**  
EBONIZED RIFT CUT WHITE OAK  
AT WOOD SLAT CEILING

### PANTRY FINISHES



**PLASTIC LAMINATE | WILSONART**  
SATIN BRUSHED BLACK ALUMINUM  
AT MILLWORK

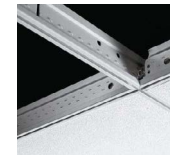


**SOLID SURFACE | CAESARSTONE**  
SATIN BRUSHED BLACK ALUMINUM  
AT COUNTERTOP & BACKSPLASH



**SOLID SURFACE | CAESARSTONE**  
EMPIRA WHITE  
AT ISLAND

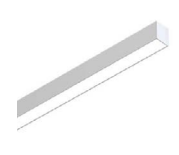
### CEILINGS & LIGHTS FIXTURES



**ACOUSTICAL CEILING TILE | ARMSTRONG**  
- OPTIMA SQUARE LAY-IN REGULAR 48"X48"  
AT OPEN AREAS  
- ULTIMA BEVELED REGULAR 24"X48"  
AT OFFICES



**WOOD SLAT CEILING | 19 WOOD**  
FAST-TRACK 1100 CROSS PIECE GRILLE  
CEILING, EBONY STAIN  
AT CONFERENCE ROOMS & PANTRY



**LINEAR PENDANT LIGHT | CORONET**  
LS1 DIRECT IN BLACK  
AT WOOD SLAT CEILING