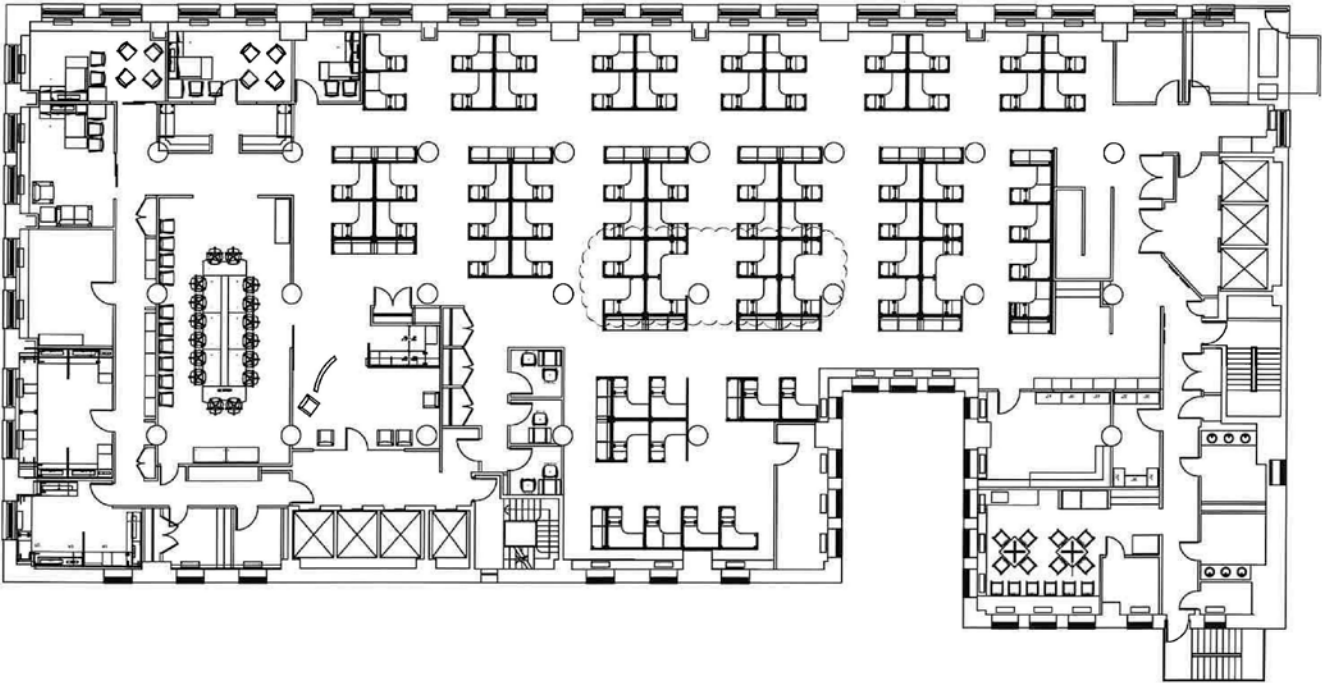


# 215 PAS



Entire 9<sup>th</sup> Floor  
Existing Conditions  
with Sample Furniture  
17,255 RSF



Howard J. Tenenbaum, EVP | 212.216.1685 | [howard.tenenbaum@slgreen.com](mailto:howard.tenenbaum@slgreen.com)  
Gary M. Rosen, Senior Managing Director | 212.216.1687 | [gary.rosen@slgreen.com](mailto:gary.rosen@slgreen.com)



All information is from sources deemed reliable and is submitted subject to errors, omissions, change of price, rental, prior sale and withdrawal without notice